

MTO300 Optical Time Domain Reflectometer



Features

5.6-Inch outdoor-enhanced touchscreen, 7.4V/4.4Ah Lithium battery

Event Dead zone as lower as 1.5meter

Combined multi dynamic range and wavelengths

Muti measurement mode, support Touching LCD and pressing keys

Warning function could prevent OTDR module from being damaged by optical signal in fiber.

Realtme measuring function, convenient to monitor the splicing process

Integrated 10mw Visual Fault Locator

Support English/ Chinese input, adopts friendly input interface, totally simulate the computer keyboard input ,

Integrated with 2GB internal memory, more than 20,000 groups curve storage

PC remote access and control function is available , which support the printing work of the measurement report

One Herts Digital Videotech Co., Ltd.

<http://www.oneherts.com.tw>

Tel : +886-7-555-5959 Fax : +886-7-552-5977 e-mail:oneherts@yahoo.com.tw

Test curve of typical events as below:

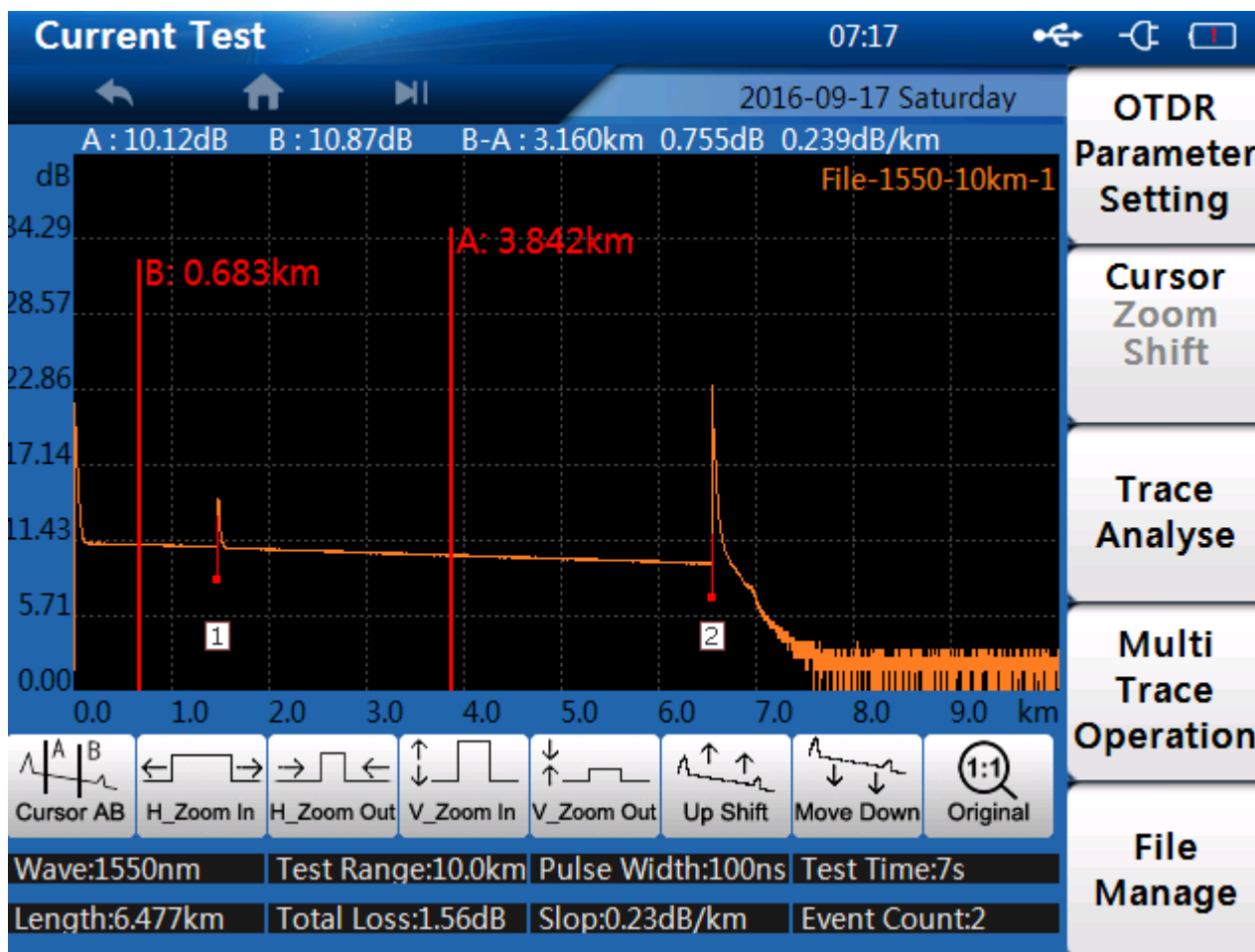
Precision judgment of fiber faults; splicing posit and connector terminal;

Precision measurement of test distance and the fiber loss

Contracted design style ,lively graphical interface, easy operation and easy analysis of various events

Measure the length of whole fiber; length between two points, as well as the distance, loss and attenuation coefficient etc

Detailed description of fiber loss distribution curve and the events



Technical specifications

Pulse Width	SM	5ns 20ns 50ns 100ns 500ns 1μs 2μs 5μs 10μs ,
Distance Range	SM	Dead zone test, 1.3km, 2.5km, 5.0km, 10km, 20km, 40km, 80km, 120km,
Sampling Resolution		Minimum 0.05m
Sampling Point		128,000
Linearity		≤0.05dB/dB
Loss Threshold		0.01dB
Loss Resolution		0.001dB
Distance Resolution		0.01m
Distance Accuracy		± (1m+measuring distance×3×10 ⁻³ +sampling resolution)
Data Storage		20000 groups of curve
VFL		10mW, CW/2Hz
Interface		3 USB ports (Type A×2, Type B×1)
Display		5.6 inch TFT-LCD, Touching screen
Battery		7.4V/4.4Ah lithium battery , support 8 hours continuous working
Working conditions		Working Temp: -10°C~+50°C; Storage Temp: -20°C~+70°C; Humidity : ≤95% (non-dew)
Dimensions/Weight		253×168×73.5mm / 1.5kg (include battery)
Packing list		Straps; Adaptor; Lithium battery; FC connector; USD Cable; User Guide; CD; softbag; cleaning cotton

Functions:

Automatic Measurement Mode: Operators do not need to choose the test distance and pulse width, the tester will automatically judge the length, and choose suitable dynamic range as well as pulse width to complete the work; The storage of event trace can be saved manually or automatically which will be convenient for data analysis

Multiple Wavelengths Measurement Mode: In order to use different wavelengths to execute the loss calculation in one fiber, we can choose duplex wavelengths test mode from parameter settings, the tester will switch wavelengths automatically

Multiple Trace Analysis: Simultaneous display 4 traces, operators can compare the traces and make analysis of any ones among the traces

Online Test: This will protect the test instruments and equipment

Duplex Operation Mode: Pure operation through touch screen ; or pure operation through the pressing keys

Data Analysis:

Save and generator standard trace file(. Sor), more than 20000 groups storage capacity

Print the analysis report and traces which make the acceptance or work easily;