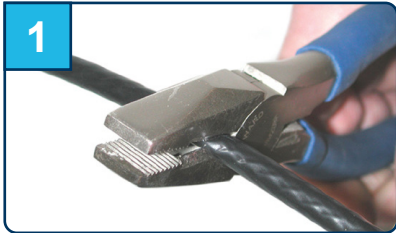
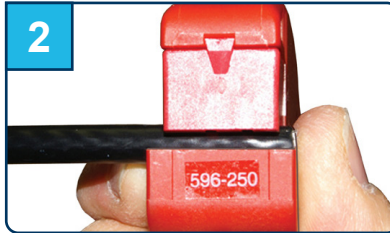


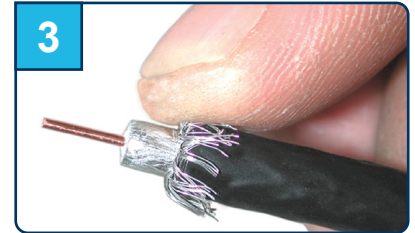
AquaTight® with Optional SignalTight® | 59/6 Series - “XL” Extended Body



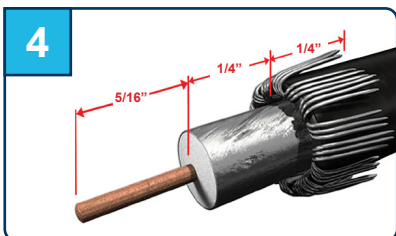
Cut the cable squarely.



Using a fixed blade with a prep tool in good condition, prepare the cable to 5/16" x 1/4" x 1/4" dimensions. Use the edge of the tool if there is no stop.



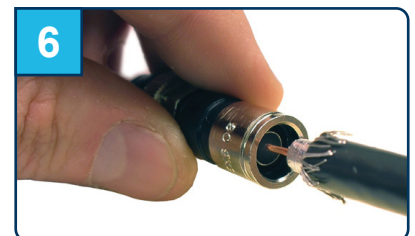
Fold back the braid. If using tri-shield or quad-shield cables, remove the additional foil layer and fold back the remaining braid.



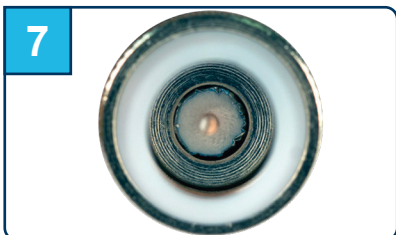
Ensure the cable is prepared to the proper dimensions.



Use the gauge on the VT tool to check the dimension of the center conductor.



Guide the center conductor and dielectric into the connector post. Insert the cable into the connector until the dielectric is flush within the post.



Here you can see the dielectric is flush within the post.



Properly seat the connector in the VT tool and fully compress it.



Install the connector onto the port and tighten to recommended torque.



EX6XLWS



EX59XLWS



EX6XLWSPLUS



EX59XLWSPLUS



VT-200

Part Number	Description
EX6XLWS	EX AquaTight® XL Series universal compression connector for 6 series cable
EX59XLWS	EX AquaTight XL Series universal compression connector for 59 series cable
EX6XLWSPLUS	EX SignalTight® AquaTight XL Series universal compression connector for 6 series cable
EX59XLWSPLUS	EX SignalTight AquaTight XL Series universal compression connector for 59 series cable
VT-200	Universal compression tool, “XL” series body

This product may be protected by one or more patents • For further information, please visit: www.ppc-online.com/patents

customerservice@ppc-online.com • 1-800-800-6652 • www.ppc-online.com